



O X L E Y ' S

ELEGANT | SUSTAINABLE | TIMELESS

WELCOME TO THE VERY BEST IN OUTDOOR FURNITURE

Oxley's make luxury, bespoke outdoor furniture in the most sustainable way possible, completely weatherproof no matter where in the world it is to be situated.

In this brochure and accompanying pricelist we seek to illustrate some of the endless combinations of design, metal colour and fabric which allow our customers to create their furniture exactly how they want it.



OUR COMPANY VALUES

We have been producing fine cast and fabricated aluminium furniture from our Cotswold factory in England since 1991.

Manufacturing the best outdoor furniture in the most sustainable way possible is the essence of what we strive to do as a business. Aluminium is one of the world's most recycled manufacturing materials, from drinks cans to alloy wheels and airplane parts. All the aluminium furniture we have ever made has been from recycled material and is constructed to last generations.

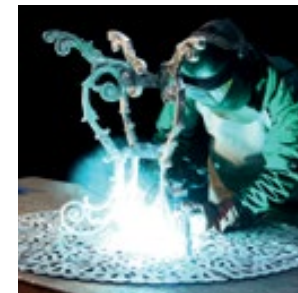
Our components come from foundries where this recycled aluminium is graded, mixed and calibrated into the correct, highest grade, aluminium alloy with which we make our exceptionally strong and durable furniture.

It is the perfect material for all-weather furniture; when properly treated it does not rust, is far lighter than other materials so chairs and tables can be easily moved and, most importantly, it requires no maintenance to keep it looking good. The quality of aluminium furniture you buy depends on the quality and quantity of the metal used in its manufacture and the time and care taken to prepare this for the finishing process.

Oxley's specialises in final construction of the furniture and applying the very best finish technology allows, thereby being able to guarantee our exceptional quality.

Our furniture will last generations.

You will never regret investing in Oxley's furniture.



OUR COLLECTIONS



ARTEMIS

PAGE 5

The Artemis design is inspired from the Curule seat dating back to ancient Rome, named after the Greek Goddess of hunting.

This powerful design was used by the highest government dignitaries and was a symbol of authority. We have adapted the original armchair design for spectacular comfort with or without a cushion.

The intricate swirling lines of the armchair back design are replicated in the Artemis tabletop, with the chair leg arch mirrored in the legs of the table.



GRANDE

PAGE 13

Our Grande design harks back to the baroque period of 18th century France.

The intricate detailing on both the chair and tabletop can only be achieved through sand casting and creates a throne like effect.

A design like this only has to be seen to know it will still be in use in generations time, an example of our flawless craftsmanship.



LUXOR

PAGE 21

The Ancient Egyptians used a great deal of animal imagery in their temples and artefacts and this design is named after their ancient capital, Luxor.

The armchair design features a lion's head on each arm of the chair and lion's head motif on the seat back, with a lion's claw detail on each foot.

The table design features lion's claw feet on the legs and a swirling flower pattern on the tabletop. The Luxor design is a true symbol of the power and elegance.



OCTAVIA

PAGE 35

In collaboration with the National Trust, the Octavia Collection takes its design inspiration from a detail from an 1872 pen and ink drawing of an herbaceous border by the 19th-century garden designer Gertrude Jekyll.

The prominent flower pattern is replicated in the back, arm and seat of the chair as well as the tabletop in beautifully intricate detail. Designed specifically with a typical English garden in mind, furniture like it (originally made in cast iron) would have been found in large gardens for nearly 200 years.



PETROSPHERE

PAGE 44

Our Petrosphere design is inspired by what we believe to be neolithic art, the carved stone balls left behind by the ancient peoples who lived in the British Isles from about 5,000 years ago.

No one knows what these intricate carvings were for or how, at a time before metal usage, they were carved. Our belief is that they were carved for their tactile feel and we have incorporated this idea into our Petrosphere design.

We have used one of the most intricate designs found as the basis of all our Petrosphere table tops and the tactile element in the armchair.



SCROLL

PAGE 51

The beautiful interlacing lines of our Scroll collection are inspired by stone carvings left around the British Isles by the ancient Celts.

Although these carvings vary significantly in pattern, at the heart of them all is the Celtic knot. This simple endless weave has no obvious start or finish and is thought to represent eternal life.

Naturally, for furniture like ours - built to last a lifetime and beyond - it is the perfect symbol to cast forever into a design.



SIENNA

PAGE 60

The Sienna design is one of our most popular as it belongs in both contemporary and classic locations.

The diamond detail of the seat back can be referenced in buildings old and new. Under the cushion the seat has a beautiful basket and weave design.

The deep casting of the tabletop demonstrates the fabulous quality of this collection, durable furniture has never looked so stunning.



CASA

PAGE 73

Our high backed Casa chair has a latticework back and seat which makes it extremely comfortable for prolonged sitting, with or without a cushion. The lightest of our chairs at 7kg for the diner and 8kg for the armchair it is also partially stackable. Although we only make two round tables in this casa design the chair does go well with many of the other table designs we make.



ARTEMIS

THE ARTEMIS COLLECTION

The Artemis design is inspired from the Curule seat dating back to ancient Rome, named after the Greek Goddess of hunting.

This powerful design was used by the highest government dignitaries and was a symbol of authority. We have adapted the original armchair design for spectacular comfort with or without a cushion.

The intricate swirling lines of the armchair back design are replicated in the Artemis tabletop, with the chair leg arch mirrored in the legs of the table.

The collection features both round and rectangular dining tables to accommodate from 4 to 12 companions along with a double bench, lounge, and coffee table.



Artemis 1160 Table with Armchairs - Mocha





Artemis 1350 Table and Armchairs - Tuscan White



Artemis 2850 Table with Armchairs - Sand Dune



Artemis 1750 Table and Armchairs - Ivory



Artemis 2300 Table with Armchairs - White



Artemis Lounger - Cobalt Blue



Artemis Loungers and Coffee Table - Matt Black

GRANDE

2980 Table with
Armchairs and Dining
Chairs - White

THE GRANDE COLLECTION

Our Grande design harks back to the baroque period of 18th century France. The intricate detailing on both the chair and tabletop can only be achieved through sand casting and creates a throne like effect.

A design like this only has to be seen to know it will still be in use in generations time, an example of our flawless craftsmanship.

The collection features two opulent dining tables to seat up to 6 and 10 companions, as well as a lounge chair, double and triple sofas, an ottoman, and a coffee table.



2100 Table with Armchairs - Antique Gold





Grande 2100 Table with Armchairs and Dining Chairs - Evergreen



Grande 2980 Table (Seats 10)- Anthracite





Grande Double Sofa and Lounge Chairs with Coffee Table - Antique Gold



Grande Lounge Chair and Ottoman - Tuscan White



Grande Double Sofas and Coffee Table - Mint Blue



Grande Triple Sofa - Antique Gold

LUXOR



3060 Table with Armchairs - Titanium

THE LUXOR COLLECTION

The Ancient Egyptians used a great deal of animal imagery in their temples and artefacts and this design is named after their ancient capital, Luxor.

The armchair design features a lion's head on each arm of the chair and lion's head motif on the seat back, with a lion's claw detail on each foot.

The table design features lion's claw feet on the legs and a swirling flower pattern on the tabletop. The Luxor design is a true symbol of the power and elegance.

The collection features round and oval dining tables, a lounger, lounge chair, double and triple sofas, an ottoman, a bench, and 4 variations of coffee table.



Luxor 1220 Table and Armchairs - Antique Gold





Luxor 1220 Table with Armchairs - Titanium



Luxor 1530 Table with Armchairs - Anthracite



Luxor 1530 Table with Armchairs - Cobalt Blue



Luxor 2150 Table with Armchairs - Desert Sand



Luxor 3060 Table with Armchairs - Matt Black



Luxor Lounge Chair - Cobalt Blue





Luxor Double Sofa and Lounge Chairs - Titanium



Luxor Double Sofa - Tuscan White





Luxor Double Sofa, Lounge Chairs, and Large Coffee Table



Luxor Lounger and Round Coffee Table - Cobalt Blue





Luxor Lounger and Round Coffee Table - White



Luxor Double Bench - Desert Sand

OCTAVIA



1000 Table set - White



THE OCTAVIA COLLECTION

In collaboration with the National Trust, the Octavia Collection takes its design inspiration from a detail from an 1872 pen and ink drawing of an herbaceous border by the 19th-century garden designer Gertrude Jekyll.

The prominent flower pattern is replicated in the back, arm and seat of the chair as well as the tabletop in beautifully intricate detail. Designed specifically with a typical English garden in mind, furniture like it (originally made in cast iron) would have been found in large gardens for nearly 200 years.

This collection features a dining chair and armchair, dining tables accommodating 2 to 10 guests, an ornate bench, a lounge, and a coffee table.



750 Pedestal Table with Dining Chairs - Anthracite





Octavia 750 Pedestal Table and Dining Chairs - Mint Blue



Octavia 1000 Table with Dining Chairs - Anthracite



Octavia 1600 Table and Dining Chairs - Tuscan White



Octavia 1900 Table and Dining Chairs - Dove Grey



Octavia Lounger and Coffee Table - Customers bespoke colour



Octavia Lounger and Coffee Table - Cobalt Blue



Octavia Triple Bench - White

PETROSPHERE



THE PETROSPHERE COLLECTION

Our Petrosphere design is inspired by what we believe to be neolithic art, the carved stone balls left behind by the ancient peoples who lived in the British Isles from about 5,000 years ago.

No one knows what these intricate carvings were for or how, at a time before metal usage, they were carved. Our belief is that they were carved for their tactile feel and we have incorporated this idea into our Petrosphere design.

The collection features dining and armchairs, tables ranging from 4 to 8 seats, a lounge chair, a double sofa, an ottoman, a lounger and two sizes of coffee table.



Petrosphere 1900 Table and Armchairs - Anthracite





Petrosphere Lounge Chair and Coffee Table - Tuscan White



Petrosphere 1900 Table and Armchairs - Anthracite



Petrosphere Double Sofa and Coffee Table - Anthracite



Petrosphere Double Sofa - Anthracite





Petrosphere Lounger - Anthracite

SCROLL



THE SCROLL COLLECTION

The beautiful interlacing lines of our Scroll collection are inspired by stone carvings left around the British Isles by the ancient Celts.

Although these carvings vary significantly in pattern, at the heart of them all is the Celtic knot. This simple endless weave has no obvious start or finish and is thought to represent eternal life.

The collection features dining and armchairs, tables from 4 to 8 seats, a lounge chair, a double and triple sofa, an ottoman, a lounger, and two sizes of coffee table.



Scroll 1120 Table and Armchairs - Tuscan White





Scroll 2750 Table with Dining Chairs and Armchairs - Anthracite



Two Scroll 2750 Tables placed end-to-end with Armchairs - White



Scroll Lounge Chairs, Double Sofa and Coffee Table - Dove Grey



Scroll Double Sofa - Evergreen





Scroll Triple Sofa, Small Coffee Table and Ottomans - Mocha



Scroll Lounger and Small Coffee Table - Desert Sand



Scroll Lounger - Anthracite

SIENNA



THE SIENNA COLLECTION

One of our most popular as it belongs in both contemporary and classic locations.

The diamond detail of the seat back can be referenced in buildings old and new. Under the cushion the seat has a beautiful basket and weave design. The deep casting of the tabletop demonstrates the fabulous quality of this collection.

The collection features four table sizes from 2 to 10 seats, four styles of chair - dining, armchair, stackable chair, and a bar stool. It includes a triple bench, a lounge chair, double and triple sofas, a lounger, ottoman and two sizes of coffee table.



Sienna 1100 Table and Armchairs - Anthracite





Sienna 2140 Table and Armchairs - White



Sienna 1100 Table with Stackable Armchairs - Mocha



Sienna Bar Table and Bar Stools - Mocha



Sienna 2850 Table and Armchairs - Anthracite



Sienna 2140 Table and Armchairs with Bar Stools - White



Sienna Lounge Chair and Ottoman - Dove Grey



Sienna Lounge Chairs and Side Table - Matt Black



Sienna Double Sofa - Dove Grey



Sienna Lounge Chair, Double Sofa, and Coffee Table - Anthracite



Sienna Triple Bench - Anthracite



Sienna Lounger - Matt Black

CASA



THE CASA COLLECTION

Our high backed Casa chair has a latticework back and seat which makes it extremely comfortable for prolonged sitting, with or without a cushion. The lightest of our chairs at 7kg for the diner and 8kg for the armchair it is also partially stackable. Although we only make two round tables in this casa design the chair does go well with many of the other table designs we make.

This collection features a dining and armchair design to accompany a 2 seater bistro table and a 4 person dining table.



Casa 900 Table and Armchairs - Anthracite





Casa 900 Table and Armchairs - Desert Sand



Casa 700 Table and Dining Chairs - Ivory

SPECIFICATIONS

Lounge Chairs, Sofas and Ottomans



GRANDE

Lounge Chair (35kg)
GRLC
Cushion code: GRLOCCU
98h x 85w x 92d (cm)
Seat height with cushion 47cm
(without NA)



GRANDE

Double Sofa (60kg)
GRDS
Cushion code: GRDSCU
98h x 148w x 92d (cm)
Seat height with cushion 47cm
(without NA)



GRANDE

Triple Sofa (85kg)
GRTS
Cushion code: GRTSCU
98h x 210w x 92d (cm)
Seat height with cushion 47cm
(without NA)



GRANDE

Ottoman (18kg)
GROT
Cushion code: GROTCU
44h x 72w x 57d (cm)



LUXOR

Lounge Chair (25kg)
LULC
Cushion code: LULCCU
98h x 106w x 98d (cm)
Seat height with cushion 48cm
(without NA)



LUXOR

Double Sofa (40kg)
LUDS
Cushion code: LUDSCU
98h x 188w x 98d (cm)
Seat height with cushion 48cm
(without NA)



LUXOR

Triple Sofa (55kg)
LUTS
Cushion code: LUTSCU
84h x 280w x 98d (cm)
Seat height with cushion 48cm
(without NA)



LUXOR

Ottoman (18kg)
LUOT
Cushion code: LUOTCU
50h x 88w x 73d (cm)



PETROSPHERE

Lounge Chair (22kg)
PETLC
Cushion code: PETLCCU
95h x 71w x 74d (cm)
Seat height with cushion 47cm
(without NA)



PETROSPHERE

Double Sofa (35kg)
PETDS
Cushion code: PETDSCU
95h x 135w x 74d (cm)
Seat height with cushion 47cm
(without NA)

Lounge Chairs, Sofas and Ottomans cont.



PETROSPHERE

Ottoman (18kg)

PETOT

Cushion code: PETOTCU

44h x 72w x 57d (cm)



SCROLL

Lounge Chair (24kg)

SCLC

Cushion code: SCLCCU

91h x 72w x 99d (cm)

Seat height with cushion 47cm

(without NA)



SCROLL

Double Sofa (38kg)

SCDS

Cushion code: SCDSCU

91h x 137w x 99d (cm)

Seat height with cushion 47cm

(without NA)



SCROLL

Triple Sofa (51kg)

SCTS

Cushion code: SCTSCU

91h x 203w x 99d (cm)

Seat height with cushion 47cm

(without NA)



SCROLL

Ottoman (14kg)

SCOT

Cushion code: SCOTCU

47h x 53w x 70d (cm)



SIENNA

Lounge Chair (18kg)

SILC

Cushion code: SILCCU

91h x 72w x 90d (cm)

Seat height with cushion 48cm

(without NA)



SIENNA

Double Sofa (32g)

SIDS

Cushion code: SIDSCU

91h x 138w x 90d (cm)

Seat height with cushion 48cm

(without NA)



SIENNA

Triple Sofa (54kg)

SITS

Cushion code: SITSCU

91h x 203w x 90d (cm)

Seat height with cushion 48cm

(without NA)



SIENNA

Ottoman (14kg)

SIOT

Cushion code: SIOTCU

40h x 72w x 57d (cm)

Loungers



ARTEMIS

Lounger (29kg)

ARL

Cushion code: ARLCU

87h x 200l x 80w (cm)



LUXOR

Lounger (35kg)

LUL

Cushion code: LULCU

87h x 205l x 80w (cm)



OCTAVIA

Lounger (29kg)

OCL

Cushion code: OCLCU

87h x 200l x 80w (cm)



PETROSPHERE

Lounger (29kg)

PETGSL

Cushion code: PETSCLU

90h x 202l x 92w (cm)



SCROLL

Lounger (35kg)

SCL

Cushion code: SCLCU

110h x 195l x 86w (cm)



SIENNA

Lounger (29kg)

SIL

Cushion code: SILCU

75h x 192l x 80w (cm)

Chairs



ARTEMIS

Armchair (10kg)
ARAC
Cushion code: ARCU
83h x 54w x 59d (cm)
Seat height with cushion 48cm
(without 42cm)
Arm height 66cm



CASA

Armchair (8kg)
CASAR
Cushion code: CACU
95h x 66w x 46d (cm)
Seat height with cushion 49cm
(without 46cm)
Arm height: 67cm



CASA

Dining Chair (8kg)
CASDC
Cushion code: CACU
93h x 46w x 46d (cm)
Seat height with cushion 49cm
(without 46cm)



GRANDE

Armchair (18kg)
GRAC
Cushion code: GRARCU
100h x 63w x 60d (cm)
Seat height with cushion 51cm
(without 43cm)
Arm height 63cm



GRANDE

Dining Chair (16kg)
GRDC
Cushion code: GRDCCU
100h x 59w x 60d (cm)
Seat height with cushion 51cm (without
43cm)



LUXOR

Armchair (14kg)
LUAC
Cushion code: LUCU
85h x 54w x 60d (cm)
Seat height with cushion 50cm
(without 44cm)
Arm height 63cm



OCTAVIA

Armchair (10kg)
OCAC
Cushion code: OCCU
93h x 53w x 56d (cm)
Seat height with cushion 49cm
(without 46cm)
Arm height 66cm



OCTAVIA

Dining Chair (9kg)
OCDC
Cushion code: OCCU
93h x 53w x 56d (cm)
Seat height with cushion 49cm
(without 46cm)



SCROLL

Armchair (13kg)
SCAC
Cushion code: SCCU
91h x 54w x 52d (cm)
Seat height with cushion 51cm
(without 47cm)



SCROLL

Dining Chair (12kg)
SCDC
Cushion code: SCCU
91h x 54w x 52d (cm)
Seat height with cushion 51cm
(without 47cm)

Chairs cont.



PETROSPHERE

Armchair (13kg)
 PETAC
 Cushion code: PCCU
 91h x 53w x 56d (cm)
 Seat height with cushion 50cm
 (without 42cm)
 Arm height 68cm



SIENNA

Armchair (11kg)
 SIAC
 Cushion code: SIARCU
 90h x 55w x 65d (cm)
 Seat height with cushion 52cm
 (without 47cm)
 Arm height: 65cm



SIENNA

Dining Chair (10kg)
 SIDC
 Cushion code: SIDCCU
 90h x 50w x 65d (cm)
 Seat height with cushion 52cm
 (without 47cm)



SIENNA

Bar Stool (13kg)
 SIBS
 Cushion code: SIARCU
 121h x 55w x 55d (cm)
 Seat height with cushion 76cm
 (without 71cm)



SIENNA

Stackable Armchair (7kg)
 CNSA
 Cushion code: CNSCU
 90h x 64w x 60d (cm)
 Seat height with cushion 49cm
 (without 44cm)
 Armchair height: 66

Benches



ARTEMIS

Bench (18kg)
 ARB
 83h x 104w x 62d (cm)
 Seat height 42cm



LUXOR

Bench (28kg)
 LUDB
 88h x 108w x 60d (cm)
 Seat height 44cm



OCTAVIA

Bench (25kg)
 OCTB
 94h x 157w x 62d (cm)
 Seat height 45cm



SIENNA

Triple Bench (39kg)
 SITB
 90h x 149w x 57d (cm)
 Seat height 47cm

Dining Tables



ARTEMIS

1160 Table (25kg)
ART1160
75h x 116d (cm)
Seats 4



ARTEMIS

1350 Table (25kg)
ART1350
75h x 135d (cm)
Seats 4



ARTEMIS

1750 Table (53kg)
ART1750
75h x 175l x 115w (cm)
Seats 6



ARTEMIS

2300 Table (66kg)
RT2300
72h x 230l x 115w (cm)
Seats 8



ARTEMIS

2850 Table (80kg)
ART2850
72h x 285l x 115w (cm)
Seats 10-12



GRANDE

2100 Table (70kg)
GRT2100
76h x 210l x 121w (cm)
Seats 6/8



GRANDE

2980 Table (96kg)
GRT2980
76h x 298l x 121w (cm)
Seats 10



PETROSPHERE

1300 Table (37kg)
PET130
78h x 130d (cm)
Seats 4



PETROSPHERE

1600 Table (57kg)
PET160
78h x 160d (cm)
Seats 6



PETROSPHERE

1900 Table (90kg)
PET190
78h x 190d (cm)
Seats 8



OCTAVIA

750 Pedestal Table (16kg)
OCT750
75h x 75d (cm)
Seats 2



OCTAVIA

1000 Table (22kg)
OCT1000
76h x 100d (cm)
Seats 4



OCTAVIA

1300 Table (39kg)
BAT1300
76h x 130d (cm)
Seats 6



OCTAVIA

1600 Table (62kg)
OCT1600
76h x 160d (cm)
Seats 8



OCTAVIA

1900 Table (120kg)
OCT1900
76h x 190d (cm)
Seats 10

Dining Tables cont.



LUXOR

1220 Table (35kg)
LUT1220
76h x 122d (cm)
Seats 4



LUXOR

1530 Table (48kg)
LUT1530
76h x 153d (cm)
Seats 6



LUXOR

2150 Table (65kg)
LUT2150
76h x 215l x 120w (cm)
Seats 6



LUXOR

3060 Table (96kg)
LUT3060
76h x 306l x 120w (cm)
Seats 8/10



CASA

700 Table (10kg)
CAST700
70h x 70d (cm)
Seats 2



CASA

900 Table (14kg)
CAST900
76h x 90d (cm)
Seats 4



SCROLL

1120 Table (33kg)
SCT1120
77h x 112d (cm)
Seats 4



SCROLL

2220 Table (78kg)
SCRT220
76h x 222l x 110w (cm)
Seats 6



SCROLL

2750 Table (90kg)
SCRT2750
76h x 275l x 110w (cm)
Seats 8



SIENNA

Bar Table (25kg)
SITP750
110h x 75d (cm)
Seats 2



SIENNA

750 Pedestal Table (14kg)
SIT750
74h x 75d (cm)
Seats 2



SIENNA

1100 Table (28kg)
SIT1100
76h x 110d (cm)
Seats 4



SIENNA

2140 Table (65kg)
SIT2140
76h x 214l x 112w (cm)
Seats 6/8



SIENNA

2850 Table (85kg)
SIT2850
76h x 285l x 112w (cm)
Seats 10

Coffee Tables



ARTEMIS

Coffee Table (9kg)
ARCT
41h x 50l x 50w (cm)



GRANDE

Medium Coffee Table (22kg)
GRCT
47h x 117l x 62w (cm)



LUXOR

Round Coffee Table (5kg)
LUCTR
47h x 47d (cm)



LUXOR

Small Coffee Table (13kg)
LUCTS
57h x 70l x 50w (cm)



LUXOR

Large Coffee Table (17kg)
LUCTL, 46h x 110l x 53w (cm)



LUXOR

Square Coffee Table (27kg)
LUCTSQ
467h x 110l x 110w (cm)



OCTAVIA

Coffee Table (4kg)
BACT
47h x 40d (cm)



PETROSPHERE

Side Table (11kg)
PETSD
42h x 51l x 51w (cm)



PETROSPHERE

Coffee Table (18kg)
PETCT,
46h x 118l x 61w (cm)



SCROLL

Small Coffee Table (11kg)
SCST
42h x 56l x 56w (cm)



SCROLL

Coffee Table (18kg)
SCCT
47h x 110l x 55w (cm)



SIENNA

Large Coffee Table (14kg)
SICT
46h x 90l x 90w (cm)



SIENNA

Side Table (13kg)
CNCTS
56h x 71l x 52w (cm)



LUXOR

Trolley (30kg)
LUTR
90h x 95w x 66d (cm)

FURNITURE COLOURS

Our aluminium furniture can be finished in almost any colour you could want and we can match to RAL colours.

Standard Finish

Oxley's furniture is available in a range of 18 colours. The plain colours are high grade architectural polyester powder finishes which are applied electrostatically and cured in our high temperature ovens. Each plain colour comes in either a smooth or a textured finish.

Classic Finish

Our classic finishes go through a further hand finishing process which gives them their unique and beautiful patina. The different finishes are shown on these pages. Should you wish to see exact matches we are more than happy to send you colour swatches in the post. Furniture can also be matched to RAL colours.



MATT BLACK



ANTIQUE GOLD *



METALLIC GRAPHITE



ANTHRACITE



MOCHA

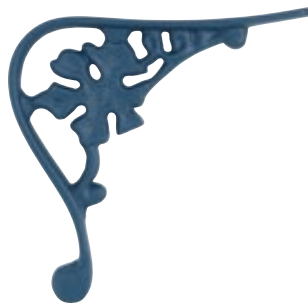


MANGANESE

* Classic Colour



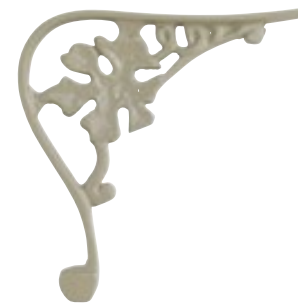
EVERGREEN



COBALT BLUE



MINT BLUE



PUTTY



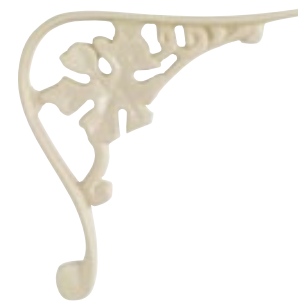
DOVE GREY



COTSWOLD GREEN



DESERT SAND



IVORY



HESSIAN



TITANIUM *



TUSCAN WHITE *



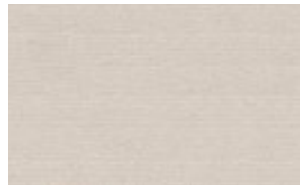
WHITE

FURNITURE FABRICS

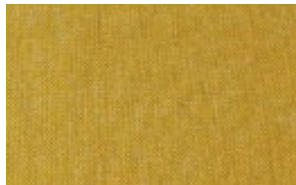
Each order we make is unique as all our customers are able to choose exactly the colour they want for their furniture frames and whatever outdoor fabric they wish. We work with all the fabric houses enabling our customers to access a vast range of possibilities and we have long experience of helping with this specification process. We also keep in stock 9 standard and 9 enhanced fabric options.

Standard Fabrics

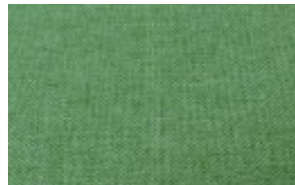
Our Boyriven range of 'Standard' fabrics are made from 100% solution dyed acrylic that is both waterproof and soft to the touch. This selection of fabric colours works particularly well with contrasting lumbar cushions.



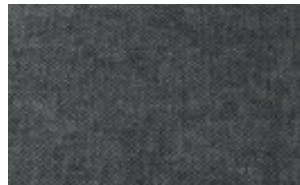
Ecru



Maiz



Jungle



Grey



Ochre



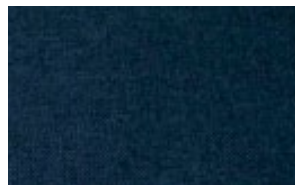
Jade



Elephant



Marsala



Sapphire

Customers Own Material

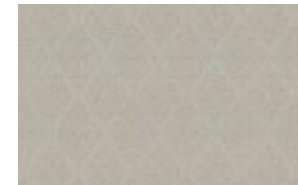
We also offer a customer own material service and cover the cushions in fabrics purchased by the customer. We can provide you with all the relevant meterage information based on the fabric specified.

Enhanced Fabric

Our stylish JAB® International range of 'Enhanced' fabrics are made from Teflon coated 100% Polypropylene that passes a 30,000 Martindale Rub Test, making it an extremely resilient yet opulent fabric. We have worked with JAB® International fabrics for many years and love the marvellous variety of beautiful fabrics they make.



Turquoise Sea



Canvas Heat



Amber Heat



Emerald Sea



Azure Heat



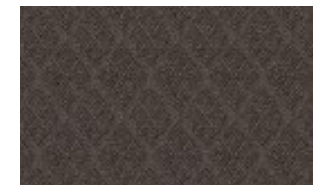
Cherry Heat



Scarlet Sea



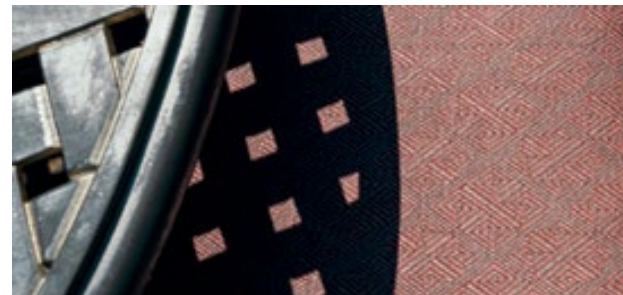
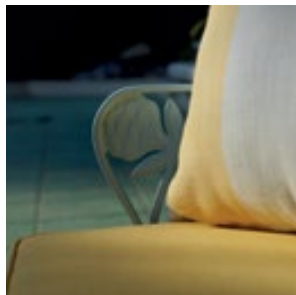
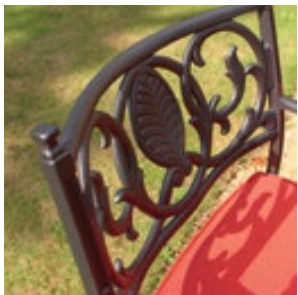
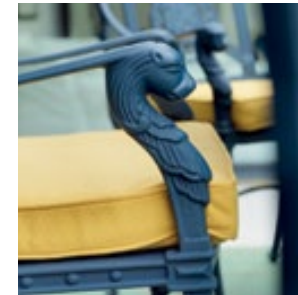
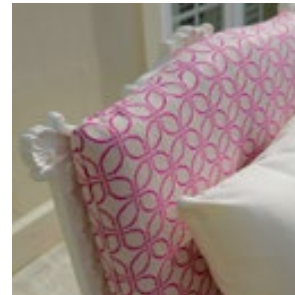
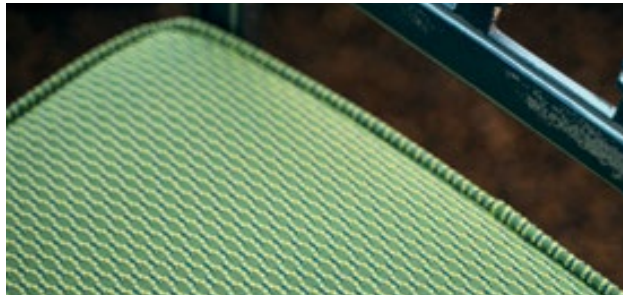
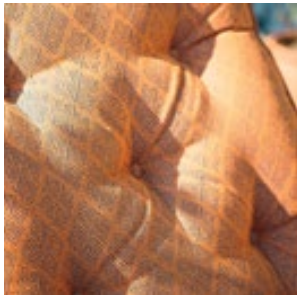
Teal Heat



Dark Heat

Furniture Covers

These are a quick and easy solution to outdoor season cushion storage. We make them for furniture featuring our sumptuously big cushions. Our protective covers are designed to withstand rain and keep cushions clean. They are not completely waterproof in severe conditions or suitable for long term winter storage.



PRODUCTION

Our furniture is made in a combination of castings and profiles. For the castings the molten recycled aluminium is poured into sand moulds which have been shaped to the form of the original hand carved design. The metal cools in its own time and the sand mould is then broken (each mould can only be used once) to extract the new casting.

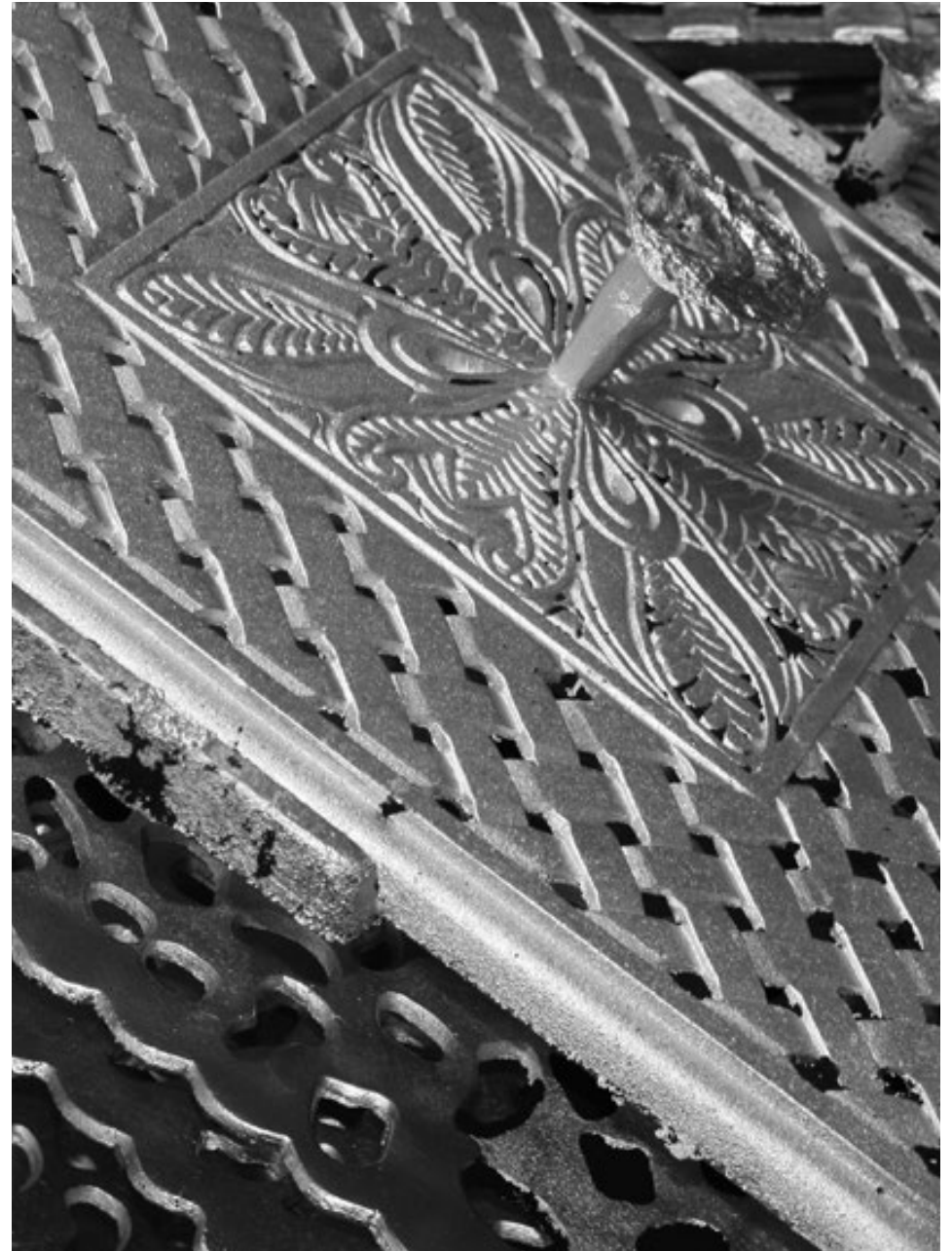
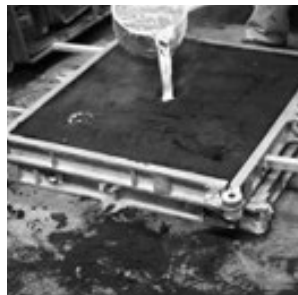
Each casting is then worked by hand until it is ready to be welded to another casting or profile. The profiles can be formed to create different frame shapes. Each item of furniture is thus built up slowly using many individual pieces until finally it is complete.

It then goes through the blast process where it is pelted at enormous velocity with manganese shot to remove any rough edges and create a physical key for the paint process. We apply a primer and then the chosen final colour. These last two stages are done in our high temperature oven.

Aluminium is the perfect material for all-weather furniture. When properly treated it does not rust, it is far lighter than iron so chairs and tables can be easily moved but most importantly it requires no maintenance to keep it looking good.

The quality of aluminium furniture you buy depends entirely on the amount of material that is used in manufacture and the time and care taken to prepare it before painting.

Done the Oxley's way, it will last generations.





HERITAGE

Metal garden furniture has been used in the English garden since the industrial revolution in the 18th century. Outdoor furniture was initially made in wrought iron but as sand casting became more widespread and expert, cast iron took over. By using this method outdoor furniture became opulent in the 19th century. The Victorians loved their gardens, and they adorned these spaces with urns, statues, gazebos – and, of course, chairs, benches, settees and tables.

Traditional designs including Gothic Revival, Renaissance Revival, and Rococo styles were often ornate and lavishly detailed with fruit and floral motifs.

Oxley's draws designs inspiration from these traditional styles rather than the recent trend for minimalist outdoor furniture, whilst replacing cast iron with cast aluminium.



CARE AND MAINTENANCE

The Furniture Frame

Wash the furniture frame with a soft rag and very occasionally car soap. Unlike dishwashing detergents and other household cleaners which are best avoided, a fine car soap will not affect the finish on the furniture. A very occasional waxing with car wax will help maintain the finish.

Cushions

Fabrics should be cleaned of crumbs and other bits of food before they become embedded. This is best done by brushing and then cleaning the cover (without removing the inner) with soap and water. Sponge directly onto the stain. Allow the cushion to air dry. Always make sure that cushions are completely dry before storing for the winter.

WARRANTY

All Oxley's furniture comes with a comprehensive product warranty – a testament to years of manufacturing experience and the use of the best materials and techniques.

Structure

Oxley's extends a lifelong conditional warranty on the structural integrity of our customers' furniture. In the unlikely event that your Oxley's furniture fails structurally during normal domestic usage we will repair, refinish or replace the aluminium frame without charge. For commercial environments this warranty is 3 years.

Paint Finish

Oxley's provides a 3 year warranty on our paint finish. Should our finish peel, blister or discolour under normal wear and tear then we will repair, refinish or replace the item without charge.

Powder Finishes evolve over time as they are batch produced and may be subject to minor colour variations and whilst we therefore guarantee to produce goods matching any item we cannot guarantee an exact match between pieces on different orders.

Cushions

Standard cushion fillings and covers are guaranteed for 3 years against any manufacturing defect. The covers are made from 100% solution dyed Acrylic. The foam inners meet the requirements of Schedule 1 Part 1 of the UK Furniture and Furnishings (Fire) (Safety) Regulations 1988. Should FR treatment or back coating be required, this does not come as standard and has to be requested at the time the order is placed.

Buy Back Guarantee

Oxley's offers our private customers a simple, powerful guarantee; we will buy back any piece of furniture you've bought from us within 10 years of you buying it, for half its original price*.

We will then reprocess and recycle your furniture, making it new again so it can enjoy a second life in another home

Please see our price list for terms and conditions and our website for full warranty and privacy policy.

* This guarantee applies to: original Oxley's customers who have owned their Oxley's furniture for 12 months or more (the original purchaser must be registered as an Oxley's customer). Only furniture, not cushions, and not sales items. The net price of purchase and not any purchase tax (VAT). If you'd like us to collect your furniture, we will at an agreeable rate.

Oxley's Furniture Ltd

Dovedale Greenway Road Blockley Moreton-in-Marsh GL56 9TS
tel: +44 (0) 1386 7018940 info@oxleys.com www.oxleys.com



www.oxleys.com